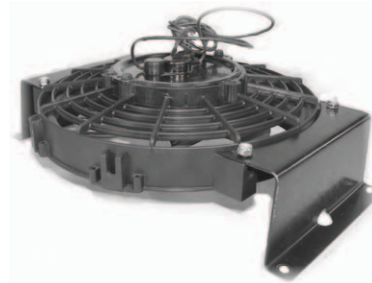
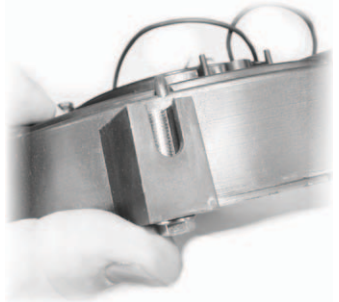
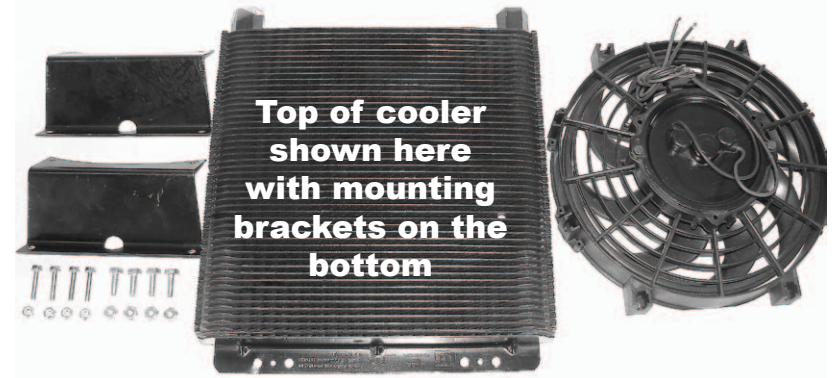




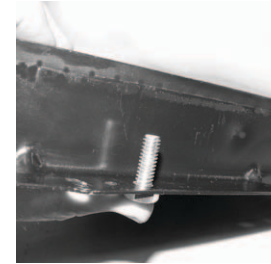
9293

# 96 Plate Oil Cooler With Fan Assembly Instructions

- Contents:
- 1-96 Plate Oil Cooler
  - 1-12 Volt fan
  - 4- 10/32 Bolts
  - 4- 10/32 nuts
  - 4- 1/4 -20 Bolts
  - 4- 1/4-20 Nuts
  - 2- Fan Brackets



1. Insert the 10/32 bolts from the bottom of the fan mount through the top of the metal fan mounting brackets. Start both bolts and hand tighten the nuts before tightening completely.



2. Your fan and bracket assembly is ready to bolt to your cooler.

3. Start the 1/4-20 bolts from the bottom of the cooler through the inner set of holes and set the fan and bracket assembly over them. Put the nylock nuts in place and tighten all four of the mounting nuts. Your cooler and fan are now ready to install.

Thank you for purchasing the EMPI Cooler or Cooler Kit. The coolers and hardware are of the highest quality on the market. Each cooler is thoroughly tested to withstand in excess of 500 LBS/PSI.

It is critical that the cooler is installed properly and all fittings tightened carefully. If the cooler requires fittings in order to mount the oil lines, install and tighten using two properly sized wrenches. One to tighten the fitting, and the other to support the cooler end to prevent it from twisting causing it to break and therefore leak. Before mounting look for an area suitable for the cooler, its hardware and all the lines. Be sure the lines are not pinched when installed and do not interfere with any moving parts.

(DO NOT install cooler in an area that will alter its factory shape by twisting or bending, this will Void the limited warranty). DO NOT weld on cooler. When installing your oil lines be sure to support the cooler end while pushing on, or pulling off lines. This will help to prevent unnecessary stress on the cooler and the possibility for breakage causing a leak. NO EXCHANGE can be made for a cooler that appears to have been damaged do to improper installation or mounted in such a way that would twist the brazed plates apart.

**All EMPI electric fans are reversible with equal efficiency as a puller or pusher.**

**To convert to a pusher style:**  
Blue is positive (+) to power and  
Black is negative (-) to ground.

**To convert to a puller style:**  
Black is positive (+) to power and  
Blue is negative (-) to ground.

